

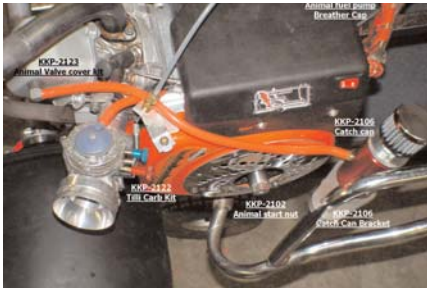
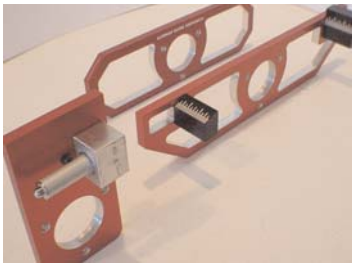
# KLUSMAN KARTING PRODUCTS

Now you can get all of the Quality you've come to expect with our race line in your karting accessories. If you are needing to make adjustments on your Chassis or replace your wheel studs we've got you covered.

Kluhsman Karting Products is a division of KRC.



WWW.KRCRACING.COM



## Chassis Components

KKP-1104	Steering Block with Toe Lock	Retail	\$24.95
KKP-1106	2 Position Steering Block		\$5.95
KKP-1108	3 Position Steering Block		\$6.95
KKP-1112	Master Cylinder Plug		\$5.95
KKP-1114	1/8" Wheel Spacer		\$0.95
KKP-1116	1/4" Wheel Spacer		\$0.95
KKP-1118	1/2" Wheel Spacer		\$0.95
KKP-1120	Lead Weight Canister (short)		\$31.00
KKP-1122	Lead Weight Canister (long)		\$34.00
KKP-1200	Front Hub w/ Bearing <b>**NEW**</b>	<b>CALL</b>	
KKP-1201	Rear Hub <b>**NEW**</b>	<b>CALL</b>	

## Engine Components

KKP-2100	Engine Oil Fill Plug	\$6.95
KKP-2101	Animal Fuel Pump Breather Kit	\$9.95
KKP-2102	Briggs Animal Starter Nut (Metric)	\$15.95
KKP-2104	Briggs Starter Nut (Standard)	\$15.95
KKP-2106	Aluminum Catch Can	\$38.95
KKP-2108	3/4"x2 Catch Can Bracket	\$10.50
KKP-2112	Gas Tank Support	\$15.95
KKP-2116	Header Brkt. w/ Support Strap 5hp	\$16.95
KKP-2122	Tillotson Carb. Adj. Knob Kit	\$10.50
KKP-2123	Animal Valve Cover Kit <b>**NEW**</b>	\$12.00
KKP-2124	Briggs Breather PVC Oil Filler Cap	\$44.95
KKP-2125	Clear Flywheel Guard	\$12.95

## Rear Axle Components

KKP-3106	Brake Disc Guard (Alum)	\$14.95
----------	-------------------------	---------

## Pit Stop Supplies

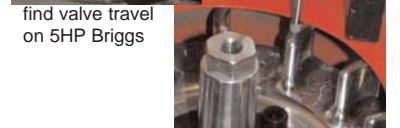
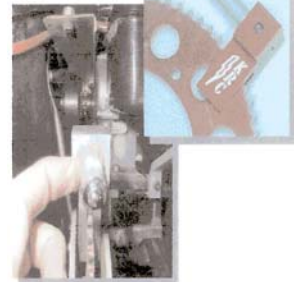
KKP-4100	1/4"x28 Lug Nut (smooth) 12qty.	\$3.36
KKP-4102	1/4"x28 Lug Nut 100qty.	\$22.00
KKP-4204	1/4-28x1 3/4 Quick Start Wheel Studs	\$12.00
KKP-4205	1/4-28x1 3/4 Quick Start Wheel Studs w/ Lug nuts	\$15.36

## Tools and Accessories

KKP-5100	Laser Toe Gauge	\$165.00
KKP-5102	Sprocket Alignment Laser	\$44.95
KKP-6200	Lifter Bore Chamfer Tool	\$36.00
KKP-6250	TDC Indicator <b>**NEW**</b>	\$39.95
KKP-6300	Child's Neck Brace	\$25.00
KKP-6400	Adult Neck Brace	\$25.00
KRC-8220	Stud Chaser	\$16.12

## Cylinder Sleeves

KKP-7000	2.750 O.D. X 4.1875	\$34.99
KKP-7002	2.813 O.D. X 4.1875	\$34.99
KKP-7004	2.840 O.D. X 4.1875	\$34.99



check crankshaft endplay

1-800-814-5745

KLUSMAN RACING COMPONENTS 1-800-814-5745